

LYMPHATIC FILARIA



1. WUCHERERIA AND BRUGIA

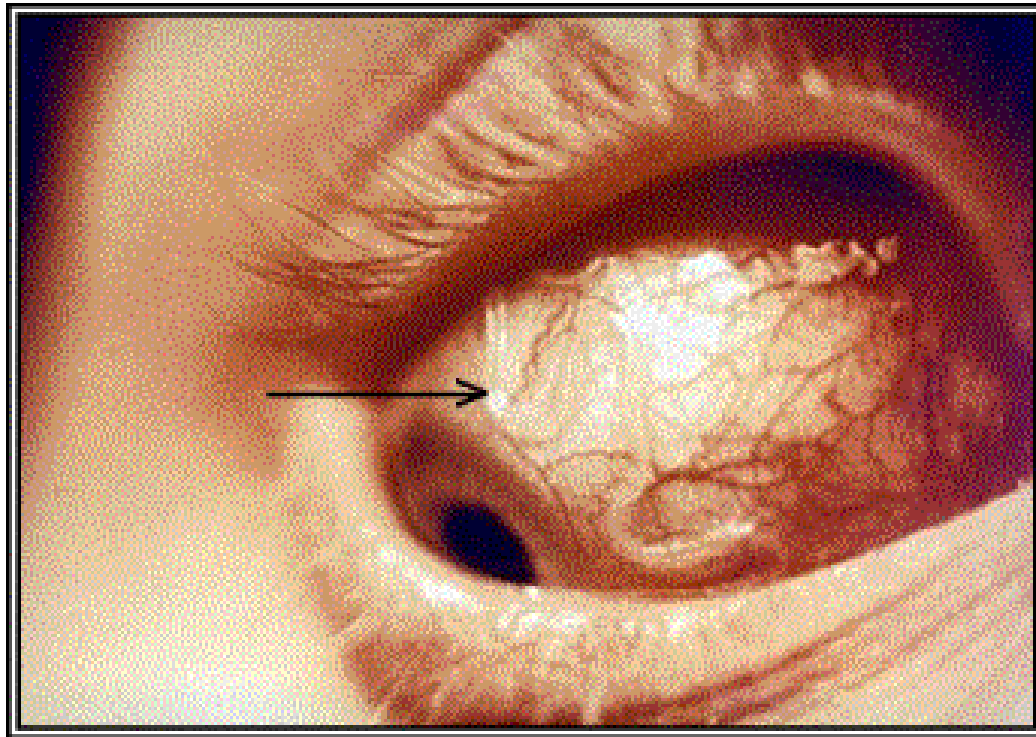
- The most frequent organisms causing this disease are *Wuchereria bancrofti* and *Brugia malayi* .
- These filarial worms block the flow of lymph, causing edematous arms, legs, and scrotum this disease is called **Elephantiasis**.
- The disease is transmitted by the bite of infected female *Anopheles* and *Culex* mosquitoes.



2. ONCHOCERCA

- This disease is caused by *Onchocerca volvulus* .
- It is characterized by subcutaneous nodules, pruritic skin rash, and ocular lesions often causing blindness.
- The disease is transmitted by the bite of a blackfly.

□ **Onchocerciasis (river blindness)**





THE END